



Innovative Solutions

dual power

Compatec

VDS - Vertical Digging System

Infrared Remote Control

vls - Vertical Lift System

Oilmax

Telematic



Vertical Digging System (VDS) – simply genius. By Wacker Neuson

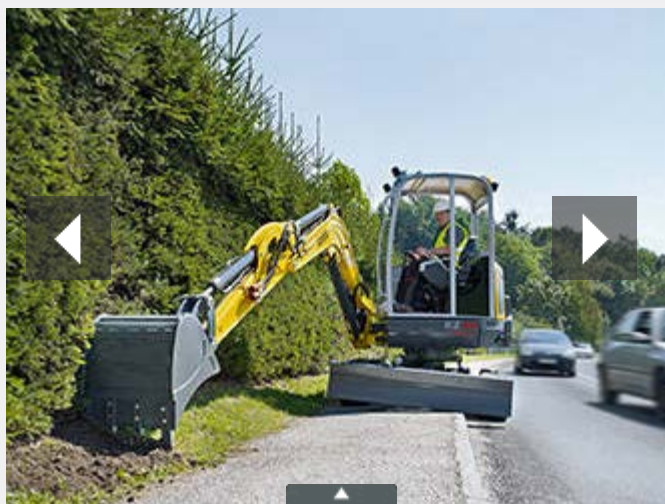
1988 – The first intelligent solution for highly efficient excavation on uneven surfaces. Vertical Digging System (VDS).

VDS enables progressive tilting of the superstructure by up to 15°. At the touch of a button operators can thus compensate for slopes of up to 27%.

Success from "pole position". Improved productivity and efficiency. In addition: Precise vertical digging results in significantly shorter excavation times. Only from Wacker Neuson.

Optimum efficiency with VDS.

With the development of this peerless system, Wacker Neuson has made an essential contribution towards increased cost-effectiveness of excavator work. The Vertical Digging System (VDS) compensates for height differences on uneven terrain and quickly sets the operator in an upright position. Thus, costs take a tumble. There are other benefits, too:

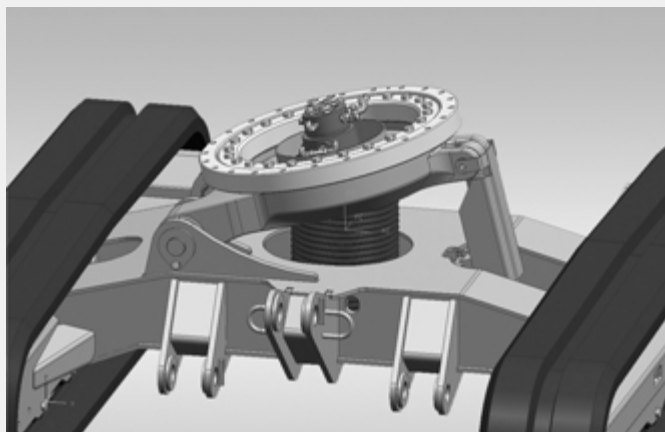


Proven flexibility is always an advantage. Wacker Neuson's Vertical Digging System (VDS) is a class of its own. The intelligent upgrading of

- Improved productivity and efficiency: Shorter digging times, thanks to precise vertical excavation.
- Up to 25% time and material savings when excavating.
- Up to 25% time and material savings when backfilling.
- Up to 20% increased stability at 15° tilt and full load.
- 360° swiveling performance.
- Upright sitting position, making it easier and more comfortable to operate.
- Simple and robust design.



Wacker Neuson's excavators:



VDS enables progressive tilting of the superstructure by up to 15° with the push of a button, allowing the operator to compensate for slopes up to 27%. This makes precise vertical digging possible even on the most uneven of terrain. Cost-effectiveness and user comfort thus get a considerable boost.

Technical Data	VDS
Max. tilt of the superstructure	15°
Enhanced user comfort and ergonomics	100 %
Savings	up to 25%

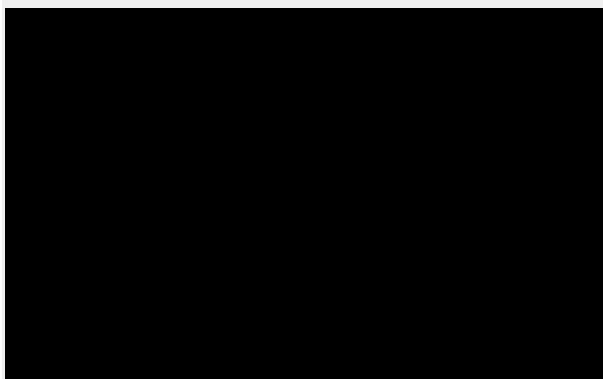


without VDS

with VDS

25% efficiency savings thanks to improved cost-effectiveness on excavation, removal, back filling and time expenditure: Maximum excavator performance – and more. – only with VDS.

In daily excavator use, there are many instances when the VDS can make all the difference compared to what traditional excavators have to offer. It is deployed wherever different height levels need to be compensated. (e.g., work on embankments or when straddling sidewalk curbs).



VDS is available for the following products:



ET18 »



ET20 »



ET24 »



EZ28 »



3503 »



EZ38 »



50Z3 »



[Worldwide](#)

[Home](#) - [Contact](#) - [Career](#) - [Extranet-Login](#) - [Imprint & Legal Notes](#)

[English](#)



Wacker Neuson
Group

